

Setidegrasib in Advanced Non–Small-Cell Lung Cancer and Pancreatic Cancer

Park W, Kasi A, Spira AI, et al. N Engl J Med. 2026;394(14):1409-1420. doi:10.1056/NEJMoa2600752



ANNENBERG CENTER FOR HEALTH SCIENCES

AT EISENHOWER

Imparting knowledge. Improving patient care.

Safety of Setidegrasib 600 mg

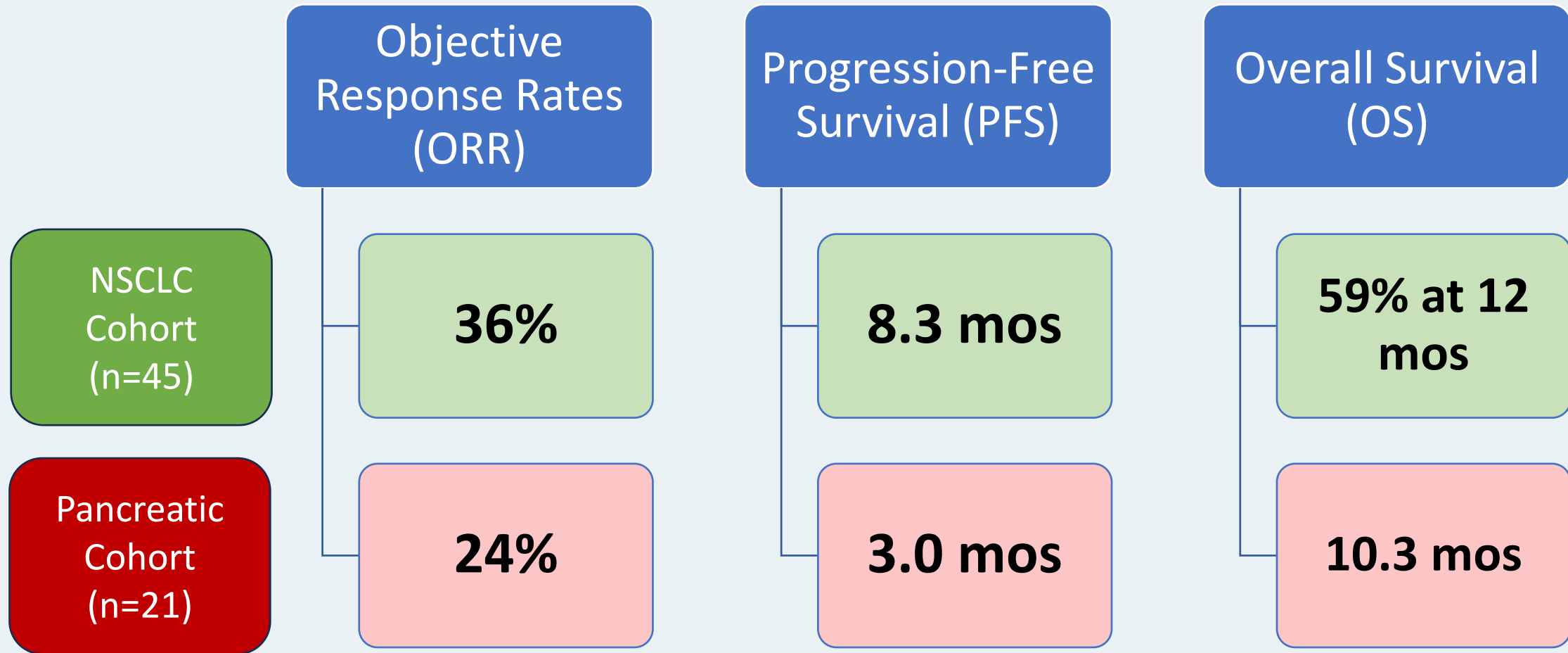
Adverse Events	Setidegrasib 600 mg in NSCLC & Pancreatic (N=76)
Any treatment-related adverse event	93%
Infusion-related reactions (all grade 1-2)	80%
• Cycle 1, week 1	78%
• Pruritus	30%
• Rash	30%
• Urticaria	25%
Nausea	30%
Grade ≥3	9%
Serious	5%
Leading to setidegrasib dose reduction	5%

Overall, setidegrasib was well tolerated with infusion reactions most commonly occurring with initial treatment

NSCLC, non-small cell lung cancer



Efficacy of Setidegrasib 600 mg



NSCLC, non-small cell lung cancer

